

GRINDER PUMPS

DUPLEX GRINDER PACKAGES

APPLICATIONS

- Low pressure sewer applications
- Sewage wastewater transfer for light commercial or residential applications

FEATURES

PACKAGE SYSTEMS

- Two cast iron ball check valves
- Control panel with integral pump starting components
- Four control float switches
- Stainless steel float bracket
- Junction box
- Basins are heavy-duty fiberglass material. Duplex basins are 36" diameter, and are available in 48", 60", 72", 84", 96", 108", and 120" depths
- 4" Adapt-A-Flex inlet hub
- Solid fiberglass cover, stainless steel rail system with sealing flange, discharge pipe disconnect, stainless steel lifting chain, ball check valve, and shut-off valve
- Easy-to-follow installation instructions



SERIES SPECIFICATIONS

Duplex Grinder Package System**

Item No.	Model	Basin		
		Size	Style	Description
520760	GP-DPLX3648	36" x 48" 91.4 cm x 121.9 cm	Fiberglass	BS3648FG
520761	GP-DPLX3660	36" x 60" 91.4 cm x 152.4 cm	Fiberglass	BS3660FG
520762	GP-DPLX3672	36" x 72" 91.4 cm x 182.9 cm	Fiberglass	BS3672FG
520763	GP-DPLX3684	36" x 84" 91.4 cm x 213.4 cm	Fiberglass	BS3684FG
520764	GP-DPLX3696	36" x 96" 91.4 cm x 243.8 cm	Fiberglass	BS3696FG
520765	GP-DPLX36108	36" x 108" 91.4 cm x 274.3 cm	Fiberglass	BS36108FG
520766	GP-DPLX36120	36" x 120" 91.4 cm x 304.8 cm	Fiberglass	BS36120FG
520840	GP-DPLX3648	36" x 48" 91.4 cm x 121.9 cm	Fiberglass	BS3648FG
520841	GP-DPLX3660	36" x 60" 91.4 cm x 152.4 cm	Fiberglass	BS3660FG
520842	GP-DPLX3672	36" x 72" 91.4 cm x 182.9 cm	Fiberglass	BS3672FG
520843	GP-DPLX3684	36" x 84" 91.4 cm x 213.4 cm	Fiberglass	BS3684FG
520844	GP-DPLX3696	36" x 96" 91.4 cm x 243.8 cm	Fiberglass	BS3696FG
520845	GP-DPLX36108	36" x 108" 91.4 cm x 274.3 cm	Fiberglass	BS36108FG
520846	GP-DPLX36120	36" x 120" 91.4 cm x 304.8 cm	Fiberglass	BS36120FG

**Multiple Grinder Package configurations and Basin/Cover assemblies available. Please call 1.800.701.7894 for information on additional package specifications not shown here.

Pumps

Item No.	Model	Volts
520865	GP-M231-15	230
520855	GP-M201-15	208

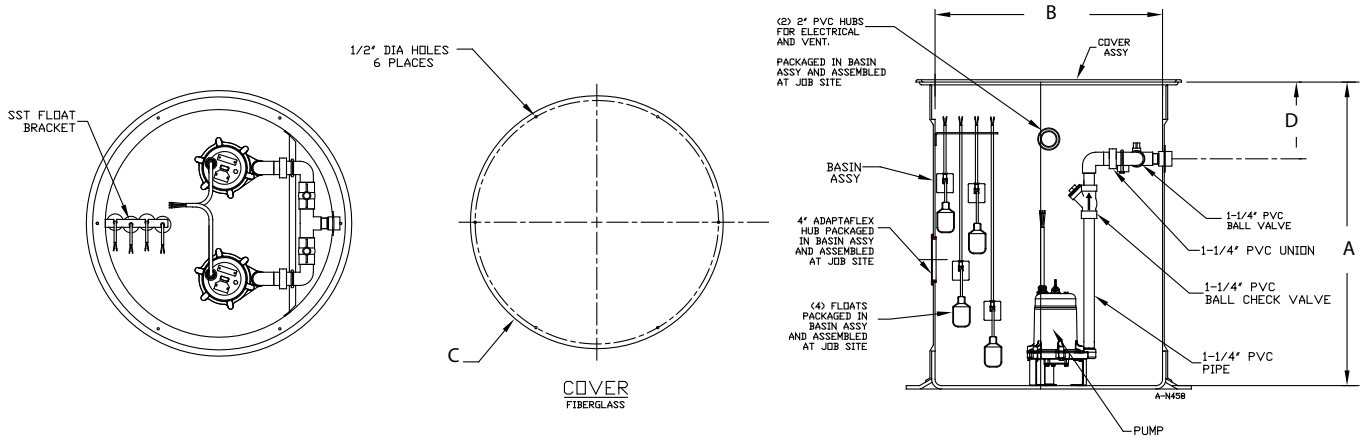
Control Panel

Item No.	Model	Volts
513375	MGPD-1C18	208/230

Control Floats

Item No.	Model	Volts
950266	CFSW	115/230

ENGINEERING DATA



Model	A	B	C	D
GP-DPLX3648	48" 122 cm	12" 30.48 cm	42" 106.6 cm	40" 101.6 cm
GP-DPLX3660	60" 152.4 cm	36" 91.44 cm	42" 106.6 cm	40" 101.6 cm
GP-DPLX3672	72" 182.88 cm	36" 91.44 cm	42" 106.6 cm	40" 101.6 cm
GP-DPLX3684	84" 213.36 cm	36" 91.44 cm	42" 106.6 cm	40" 101.6 cm
GP-DPLX3696	96" 243.8 cm	36" 91.44 cm	42" 106.6 cm	40" 101.6 cm
GP-DPLX36108	108" 274.3 cm	48" 121.92 cm	42" 106.6 cm	40" 101.6 cm
GP-DPLX36120	120" 304.8 cm	48" 121.92 cm	42" 106.6 cm	40" 101.6 cm

PUMP PERFORMANCE DATA

